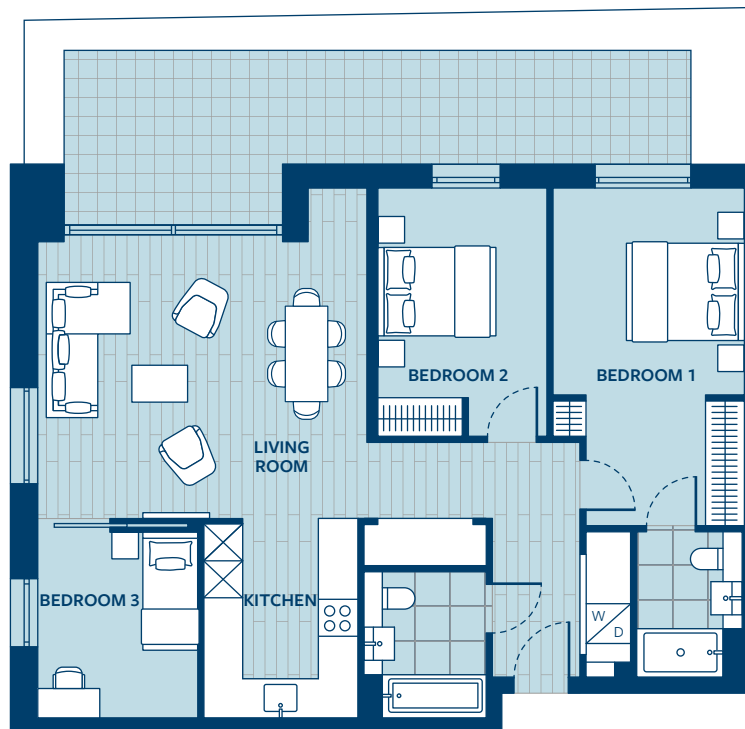


Apartment 58

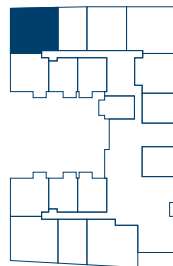
Ground floor | 3 Bedroom



Dimensions 95.0 sq m/1,022.6 sq ft

Kitchen	3.30m x 2.55m
Living room	5.37m x 4.40m
Bedroom 1	5.48m x 3.12m
Bedroom 2	4.00m x 2.85m
Bedroom 3	3.00m x 2.57m
Terrace	23.1 sq m/248.7 sq ft

Locator



Key

W/D	Washer/dryer
☒	Fridge/freezer/oven within tower

All dimensions have been taken from the longest and widest parts of a room.

Floorplans are not to scale and are indicative only. Location of windows, doors, bathroom fittings, kitchen units and appliances may differ. Dimensions given are approximate and should not be used to order carpets or furniture. Balcony and terrace sizes and locations may differ from those illustrated.



CONTACT
020 7409 8756
NEWHOMES@SAVILLS.COM